

Around the Campfire

Girl  
Scouts

100  
Years



*Girl Scouts are special people.* They leave their mark on communities and in the hearts of their families, friends, and Girl Scout sisters. They leave their marks on our camps as well, as illustrated in the stories in this newsletter about exciting projects happening at both Camp Timberlane and Camp Sugarbush. One might even note the parallels between the importance of bridging - a beloved Girl Scout tradition that honors girls' achievements throughout the year and celebrates their "crossing the bridge" to the next Girl Scout level - and the recent improvements as we

"bridge" to a new era both locally at the Girl Scouts of North East Ohio, and nationally as we honor our 110th birthday as Girl Scouts of the USA.

Recently, we were lucky enough to enjoy not one, but two, beautiful Ohio spring days at Camp Timberlane and Camp Sugarbush where girls, volunteers, and community members gathered for the dedication ceremony of recent improvements at each camp property. April 10 brought beautiful blue skies, chilly temps, and warm hearts for the dedication of the Fullgrave Bridge and Fisher's Crossing at Camp Timberlane. Additionally, on May 1 we celebrated the many improvements being made to Camp Sugarbush. This summer, campers will be able to enjoy a scenic paddle on the newly expanded lake and picnic under the new Welcome Pavilion. Benches provide overlooks where guests and campers can rest and enjoy the respite that Girl Scout Camp provides.

These improvements will open up amazing outdoor experiences for a whole new generation of Girl Scouts and we are excited to celebrate not only the improvements made at Camp Timberlane and Sugarbush but also the historic birthday of Camp LedgeWood, which celebrates its 90th birthday this year. 2022 is truly a year of "bridging to the future" for the Girl Scout Movement.

Jane Christyson, CEO  
Girl Scouts of North East Ohio

# Share Your Sash

Laura Mottor, GSNEO's Manager of Individual Giving, speaks to Kathy Moock about her new role.



**Welcome to Kathy Moock, new Chair of the GSNEO Board of Directors.** Kathy has served on the Board of Directors and its Executive Committee as both the Secretary and now as its Chair. She has also served as Chair of the Board Development Committee, the Women of Distinction Event Chair, a Dessert First committee member, and a member of the Women of Distinction Selection Committee. In 2019, she was a GSNEO Woman of Distinction Honoree. This is in addition to her work as a member and officer of a multitude of other organizations! I had the distinct pleasure of speaking with Kathy about her experiences with Girl Scouts as a girl and as an adult.

Kathy, we're excited to welcome you as the new Board Chair, and to help us get to know you, I'd like to ask you a few questions about your experience in Girl Scouts – both as a girl and as an adult. How long were you a Girl Member?

*All twelve years! I was First Class, too, but that's called Gold Award now. My girls were both in it, too.*

That is incredible! Girl Scouts has been part of your life, and your family's life, for so long. Can you describe what Girl Scouts means to you in 10 words or less?

*A place for every girl to feel welcome.*

That's exactly what we strive for. Can you tell us about something you probably would never have been able to do if it had not been for Girl Scouts being a part of your life?

*Going to college! I'm from a smaller town in Kentucky, and half of my graduating high school class did not go to college. I think Girl Scouts opened me up to so many avenues through the badges and experiences that my interest was piqued and I wanted more – and wanting more meant college!*

Kathy, as you know, Girl Scouts are always prepared – what's one thing you always carry with you?

*I've been downsizing purses lately, so honestly not much! But the one thing I do always have with me is cash. It's a long-held habit and it always comes in handy. When I'm out with my friends and no one has money for a tip, I always have it covered.*

How funny, that's a great idea. I wanted to ask next if you know where your sash is, but I see you have it with you!

*Yes! It was at my Mom's house for many years, but I have it now.*

We're so glad you could share that with us! Do you have a particular badge you are especially proud of?

*Absolutely. I am most proud of the very last badges I earned. By the time I was a sophomore or junior in high school, I had earned every other badge I could at the time... but I wanted all the badges! Those that know me know I'm all about "no wet, no sweat, no dirt," so hardly anyone believes that I earned my Primitive Camping badge and a few related badges. We carried everything we needed for an entire week of camping on our backs and hiked about two hours from base camp to set up. It was the most unbelievable experience! We dug our own latrines, purified our own water, cooked everything over a campfire – all in July in Kentucky! So it was at least 150 degrees outside [laughs]. About 3 or 4 days in, I found I had an uncomfortable rash, so I hiked the couple of hours back to base camp just for them to tell me it was heat rash and send me back the couple of hours back to camp, but in the end I did it! I earned all the remaining badges and reached my goal.*

What advice would you give to the young Girl Scouts of today?

*Stick with it! Some of the best opportunities and richest experiences are in the higher levels of Girl Scouts, and I want as many girls as possible to have access to those opportunities.*



# Bridging Generations at Camp Timberlane

## Fullgrabe Bridge



*The children of Mary Lou Fullgrabe and their families, including son Dan Bragg, in front of the newly-dedicated Fullgrabe Bridge at Camp Timberlane (2022).*

There are some individuals that are so passionate about Girl Scouts that – if it were possible – many

agree that they would bleed green. One such “Green Blood” was Mary Lou Fullgrabe: Girl member, volunteer extraordinaire, staff member, and even Executive Director of Girl Scouts of North East Ohio’s (GSNEO) Erie Shores Legacy Council.

Camp Timberlane held a special place in Mary Lou’s heart, and in the late 1980s, a bridge was built and named in her honor. The bridge stood for many years until it sadly washed away in the 2020-21 winter storms. When told of this, Mary Lou’s son (and former GSNEO Board Chair) Dan Bragg and his family immediately stepped up to fund the bridge replacement through personal donations and matching funds from Dan’s company, Merrill Lynch. Thanks to Dan’s support and Mary Lou’s legacy, Fullgrabe Bridge will continue to support Girl Scouts at Camp Timberlane for many more generations.

## Fisher’s Crossing & Rainbow Bridge



GSNEO is fortunate to have another pair of dedicated “Green Bloods” with a passion for Camp Timberlane. Long-time volunteers Bob and Fran Fisher have been integral parts of two different trail bridge projects over the past three decades. The first bridge was built in 1991 by nine Girl Scouts from Avon Lake Troop 745. At the time, the girls were eager nine-year-olds aided by construction equipment and Camp Manager Ed Lampe.

Four years after the first bridge was built, Avon Lake Troop 745 undertook the building of a second trail bridge (photo above). This bridge still stands today and was built entirely by human power! In the spring and summer of 1995, the “Dads and Daughters” of the troop began by clearing what is now the Yellow Connector trail to make it easier to carry the supplies that were donated by many of the dads’ companies. The plastic

tubing construction scraps salvaged from various projects inspired the “Rainbow Bridge” name, which it is still known as today.

In 2022, over thirty years later, Avon Lake Troop 745 is still making an impact at Camp Timberlane. While hiking at the camp and reminiscing, the Fishers eyed the original bridge from 1991 and spoke with Camp Manager Ed Lampe. Ed confirmed their suspicion that the bridge needed to be replaced, and the Fishers jumped into action. Through personal donations and a matching retiree gift from Bob Fisher’s former company, the new bridge now called Fisher’s Crossing has undergone a complete rebuild!

The next time you visit Camp Timberlane, take a moment to walk across its bridges and appreciate the many hands, hearts, and histories that worked to make these pathways possible.



*Bob and Fran Fisher stand with family in front of the newly-dedicated Fisher’s Crossing bridge at Camp Timberlane (2022).*

# Improving Camp Sugarbush

**The past year has been good to our GSNEO camp properties! Our easternmost camp, Camp Sugarbush, is ready for summer fun with some incredible improvements thanks to two passionate donors.**



*Camp Sugarbush Capital Campaign Volunteers: Mary Jeanine Pipino (left) and Shelley Taylor (right).*

Mary Jeanine Pipino and Shelley Taylor have a strong connection with Camp Sugarbush, and their volunteer efforts raised over \$100,000 for several much-needed structures at Camp Sugarbush, including a new Welcome Pavilion (donated by Jim and Mary Jeanine

Pipino & Family), a Waterfront Pavilion (donated by the Taylor family) with an attached Watercraft Storage Shed (donated by Farmers National Bank and Farmers Trust Company), and a lake expansion that both tripled the size of the lake and officially named it “Lake Nancy Van.” Also notable were the generous contributions of Sally & John Taylor and the addition of a new dock to the expanded lake.

Mary Jeanine and Shelley’s long-reaching vision included earmarking funds for both scholarships and training staff and volunteers at Camp Sugarbush.

There are even more additions and improvements to come! As part of the effort to make it to GSNEO’s target-sports destination, slingshot, tomahawk-throwing areas are currently under construction at the camp.

Thank you so much to the many donors that made these much-needed improvements to Camp Sugarbush possible.



*The expansion to Lake Nancy Van tripled the size of the previous lake, allowing more girls to enjoy water sports than ever before!*



*On May 1, 2022, the Camp Sugarbush Improvements were officially re-dedicated. Pictured: The event’s flag ceremony taking place beneath the new Waterfront Pavilion.*

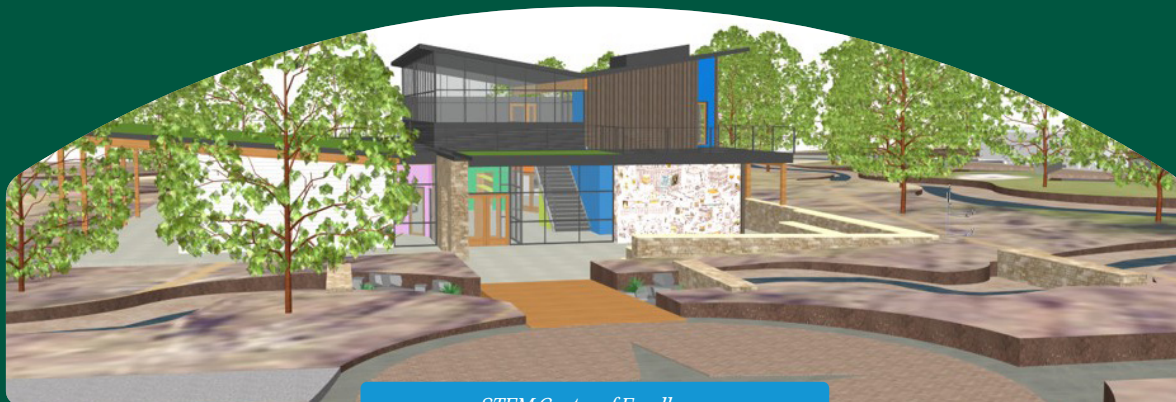
## Next Issue:

# Camp Ledgewood & the STEM Center of Excellence

Girl Scouts of North East Ohio is excited to share that the State of Ohio has designated \$250,000 in the 134th Ohio General Assembly's capital appropriation's bill for funding for our STEM Center of Excellence at Camp Ledgewood. The state capital budget dollars will be used for construction of this unique space for students in Northeast Ohio to experience STEM (science, technology, engineering, and math) learning with hands-on activities using state-of-the-art equipment.

Visit [gsneo.org/STEMCenter](http://gsneo.org/STEMCenter) to learn more about the exciting activities the STEM Center of Excellence will provide, and to see a 3D tour of the architect's design!

Stay tuned for the next edition of *Around the Campfire*, where we look forward to sharing more exciting news and updates about Camp Ledgewood and the STEM Center of Excellence!



*STEM Center of Excellence*

## Juliette Gordon Low Society

The Juliette Gordon Low Society was established in memory of our founder, Juliette Gordon Low, to thank and honor friends of Girl Scouts who choose to make Girl Scouts of North East Ohio part of their legacy and a beneficiary of their estate plans. With their foresight and planning, these donors are crucial to ensuring that our council will be able to provide future generations of Girl Scouts with opportunities to reach their fullest potential.



### **Erik and Eva Andersen-**

Girl Scout Movement-wide  
Challenge Planned Gift

### **Dianne Belk and Lawrence Calder-**

Girl Scout Movement-wide  
Challenge Planned Gift

### **Mary Lou A. Britton**

### **Patricia A. Broughton**

### **Amie & Phil Cajka**

### **Marian R. Calvin**

### **Jane Christyson and Bob Mahoney**

### **Tina Marie Collins**

### **Laura Bailey Culp**

### **Meredythe Gray Daley**

### **Donna M. DeFiore**

### **Steel Fixler**

### **Gunta Douglas**

### **M. Elizabeth (Beth) Frank**

### **Brenda Heidinger**

### **Claudia W. Jones**

### **Mona Karoghlanian**

### **Pam Kirik**

### **Kimberly Klima**

### **Lizbeth W. Kohler**

### **Carole A. Krupa**

### **Gabrielle Love**

### **Dot MacIntyre**

### **Lisa Maida**

### **Sharon Mathie**

### **Judith E. Matsko**

### **Leslie R. McGinnis**

### **Debbie Minerich**

### **Sue Neff**

### **Benjamin G. and Jane Norton**

### **Marilyn O'Brien**

### **Sandra L. Reid**

### **Margaret A. Renwand**

### **Susana L. Rogers**

### **Kathleen Scheutzow**

### **Laura and Tim Schultz**

### **April Holly Smith**

### **Pamela Valentine**

### **Joan P. Villarreal**

### **Vivian von Gruenigen, MD**

### **Marc and Julie Weagraff**

### **Michele L. Weilnau**

*To learn more about the Juliette Gordon Low Society, contact VP of Fund Development Julie Weagraff at 330-983-0399 or [jweagraff@gsneo.org](mailto:jweagraff@gsneo.org).*

**Want to be featured in our next newsletter?**

We'd love to hear from you! Share your stories with us.  
Email your story to [funddevelopment@gsneo.org](mailto:funddevelopment@gsneo.org)

## Upcoming Council Events

Mark your calendars for these important GSNEO dates! For more information and to keep up-to-date, follow Girl Scouts of North East Ohio on social media.

**August 10 - 13**  
Adult Learning  
Experience

**September 2 -  
November 18**  
Magazine &  
Snack Program

**September 17**  
Girl Scout Day  
at Cleveland  
Metroparks Zoo

**October 1**  
New Girl Scout  
Membership Year

**October 2**  
Camp Ledgewood 90th  
Anniversary Celebration