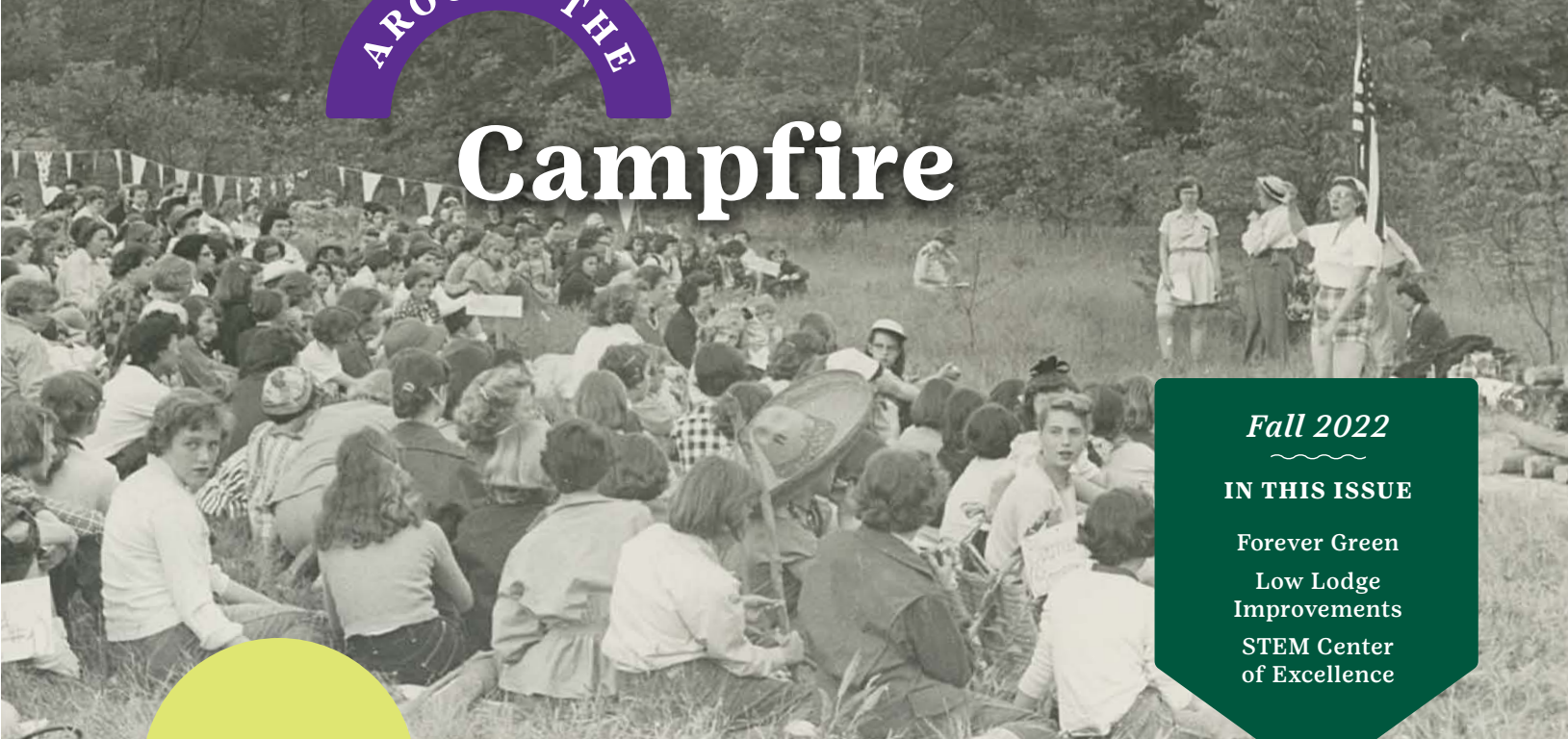




Campfire



Fall 2022

IN THIS ISSUE

- Forever Green
- Low Lodge Improvements
- STEM Center of Excellence

Girl Scouts and camping are synonymous.

When you hear the words “Girl Scout Camp,” a sense of nostalgia washes over you. You remember sunny days spent hiking, canoeing, and swimming; and hot summer nights around a campfire with friends making s’mores, sharing stories, and cheerfully singing campfire songs. There has certainly been no shortage of nostalgia this year as we honor 110 years as Girl Scouts of the USA; but also, as we celebrate the 90th birthday of Camp Ledgewood here at Girl Scouts of North East Ohio.

While Girl Scouts is rooted in honoring the past and tradition, it has grown to become the organization best positioned to help girls develop the science, technology, engineering, and math (STEM) competencies they need to become the next generation of female leaders! That’s why we are so excited about the addition of the STEM Center of Excellence at Camp Ledgewood. We know that if you give girls the chance to explore STEM fields, they will take off, and discover their talents. Girl Scouts encourages

this growth, providing countless opportunities for Girl Scouts of all ages to nurture the natural scientist inside them.

With 110 years of Girl Scouting and 90 years of Camp Ledgewood, we have much to reminisce about, and much to look forward to. Through the generosity of donors and the success of the cookie program, Camps Timberlane, Sugarbush, and Ledgewood have received significant upgrades in recent years . These special places encourage risk taking and personal discovery and will encourage girls to continue to be problem solvers, go-getters, dreamers, and doers who are creating a better future for all.

Jane Christyson, CEO
Girl Scouts of North East Ohio



Forever Green:

Kate Murgatroyd

For this Camp Ledgewood-focused issue of *Around the Campfire*, GSNEO is delighted to spotlight longtime member, crafts instructor, and supporter Kate Murgatroyd. Kate (also known at camp as “Heavens to Murgatroyd” or “H²M”) is a talented painter with a gift for working in watercolors and is well-known in the local Girl Scout community for her beautiful paintings of Camp Ledgewood. For this conversation, we spoke with Kate on-site at – you guessed it – Camp Ledgewood.

How long were you a Girl Member?

I was only a Girl member for a year! My two daughters were both in Girl Scouts for much longer, though. My one daughter was even Camp Director here at Ledgewood for four years. As an adult, I’ve been a Lifetime Member since 1991.

Do you know where your sash from your time as a girl member is?

Yes and no. Sadly, it was lost when the home I lived in at the time burned down.

You’ve obviously made up for it as an adult member though, as you’ve been incredibly active for such a long time and have collected a great deal of memorabilia along the way. Either as a girl or adult, do you have a particular badge or patch you are especially proud of?

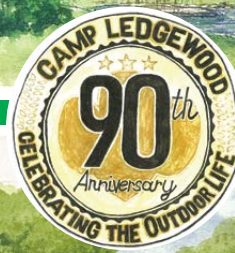
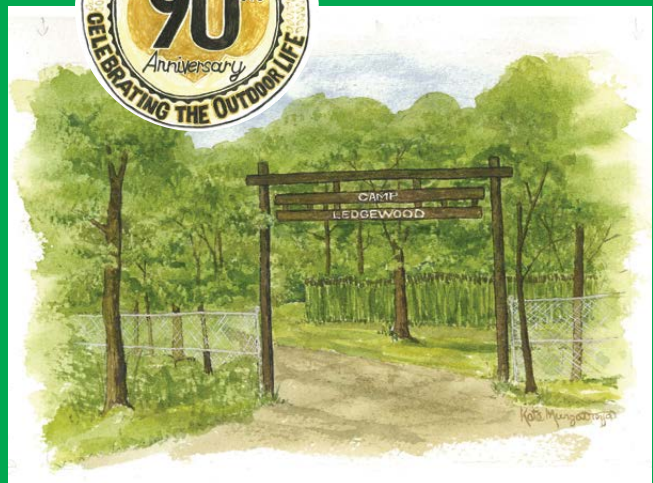
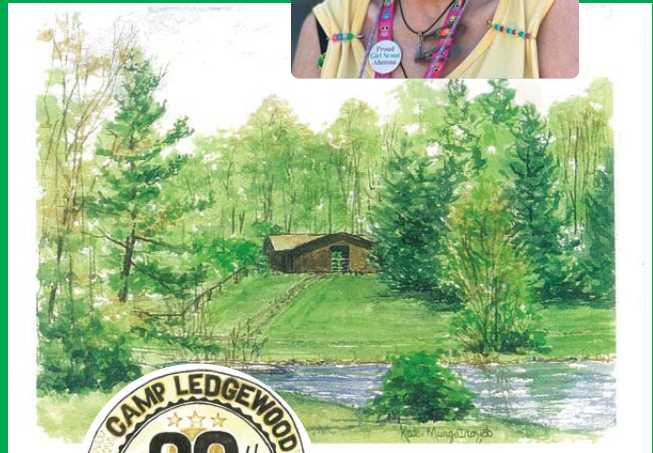
I am actually most proud of the “patch hats” I’ve been working on for some time now. I love finding things through thrift stores, yard sales, and that kind of thing. So I thought it was a great find when I got ahold of a bunch of old hats from Subway – the sandwich shop. The hats are the perfect green! I cover the logo (and the rest of the hat) with pins and patches for a really unique way to display them.

You are known for being incredibly creative and artistic, so this makes perfect sense. In fact, you’re known especially around GSNEO for your beautiful paintings of Camp Ledgewood. What inspires you to paint different scenes at camp?

You know, my daughter said something once about her feeling closer to God in the woods than in a church, and I really felt that. When I’m at camp, I feel closer to everything; closer to life. I meet so many good people through Girl Scouts, and I feel so inspired to capture the colors and lifeblood in this atmosphere.

Beautifully said. As you know, Girl Scouts are always prepared – what’s one thing you always carry with you?

Spotlighting Girl Scout Alums & Supporters



My phone, but not for the reasons you might think. I carry my phone because that’s my camera. I want to capture everything – the new and the old. I prefer painting from photographs I have taken myself, and my camera phone is never far.

Can you tell us about something you probably would never have been able to do if it had not been for Girl Scouts being a part of your life?

Public speaking — I always hated speaking in front of crowds, but I intentionally ran for PTA president when my daughter was in school because I wanted to get better at it. I spoke on stage at Blossom that year.

What advice would you give to the young Girl Scouts of today?

Learn the songs! Learn the traditions. Keep a place in your heart for these memories, and keep in touch with those that helped you make them.



STEM Center of Excellence to Boost Women in STEM



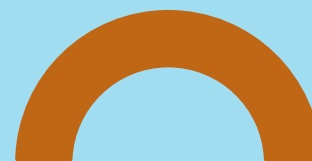
Did you know the United States is facing a science, technology, engineering, and math (STEM) workforce crisis? In the next decade, the U.S. workforce will need 1 million new STEM professionals. GSNEO is preparing to help fill this essential job pipeline by introducing girls to a safe space in which they can begin developing the skills, training, networks, and tools they need to fill these important roles by building a STEM Center of Excellence at Camp Ledgewood in Peninsula, Ohio.

The location will place the STEM Center within a half hour drive time of 51% of GSNEO members and over 100,000 kindergarten through fifth grade school-age students.

“The STEM Center of Excellence will be home to equipment such as 3D printers, classroom space, an observatory, outdoor gardens, and more to inspire Girl Scouts, in addition to providing opportunities to collaborate with local educators, to impact a larger group of youth. This community asset will help girls and underserved youth in the region develop their STEM identities at an early age, and we are so pleased that the state legislature and Governor’s office supported funding for the project.”

- Jane Christyson

The STEM Center of Excellence will include a wet lab, a tech lab, a retractable access roof for observatory access, an outdoor classroom space, and much more.

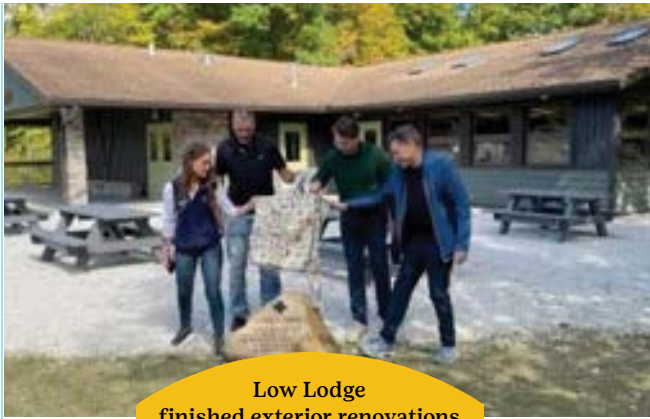


Scan the QR code for a 3D tour of the STEM Center of Excellence!

For more information or to support the STEM Center of Excellence, contact VP of Fund Development:

Julie Weagraff
jweagraff@gsneo.org
330-983-0399





Low Lodge finished exterior renovations & new restrooms (right)



Freedom Climber and Rock Wall



Low Lodge main kitchen space improvements

Low Lodge Gets Much Needed Improvements

Low Lodge, Camp Ledgewood's well-loved and heavily-trafficked mess hall, has been the recipient of significant upgrades this year. Those familiar with the space will find it nearly unrecognizable! Some of the most exciting improvements are highlighted here.

Mealtime Convenience

- Drink station across from the kitchen
- Newly designed kitchen layout that expands storage and access with new energy efficient equipment
- New dirty dish return system using a conveyor belt

Beautification

- Skylights
- Custom fireplace mantle
- Refinished floors that look brand new
- New siding

Overall Improvements

- New patio including a gas grill for outdoor cooking, shade sails, and new picnic tables for dining (donated in part by Richard Moore in honor of his late wife, Carol Smith)
- Redesign of the porch of the building so it can be used as a stage
- Restroom redesign, including open trough sinks so girls can wash their hands without having to wait in line
- Installation of an indoor stationary climbing wall and rotating rock wall



Juliette Gordon Low Society
FEATURE

“I have included Girl Scouts of North East Ohio as a beneficiary for my retirement account. As a Gold Award Girl Scout and Lifetime Member this was an easy decision to make. I will rest easy knowing that with my help and others who make gifts GSNEO will continue to serve Girl Scouts for years to come.”

— **Grace Ehlert**
Juliette Gordon Low Society Member
gsneo.org/legacy



**Camp
Ledgewood**
*through the
Decades*

1930s



Girl Scouts dress in costume while camping at The Viking's Home at Camp Ledgewood

1940s



Girls gather for a photo in the loft of Chalet

1960s



Girls Scouts gather in Low Lodge

1990s



Girls and a volunteer explore during a hike

2010s



Girl Scouts pose for a photo on the last day of resident camp

Today



Girls gather in the Chickadee Program Center, which opened in October 2019





One Girl Scout Way
Macedonia, OH 44056
gsneo.org

Office of Fund Development
330-983-0430

NON-PROFIT
ORGANIZATION
US POSTAGE
PAID
AKRON, OH
PERMIT NO. 226



Upcoming
**COUNCIL
EVENTS**



Mark your calendars for these important GSNEO dates!

For more information and to keep up-to-date, follow Girl Scouts of North East Ohio on social media.

December 31

Deadline for nominations for Women of Distinction

January 1

GSNEO Cookie Program begins

February 22

World Thinking Day

March 5 - 11

Girl Scout week

March 10

Download the Girl Scout Cookie Finder app to find a cookie booth near you

March 12

Girl Scout's 111th Birthday

April 15

Annual Meeting and Volunteer Recognition Event

May 19

2023 Women of Distinction Awards Event



Girl Scouts of North East Ohio



@GSNEO